

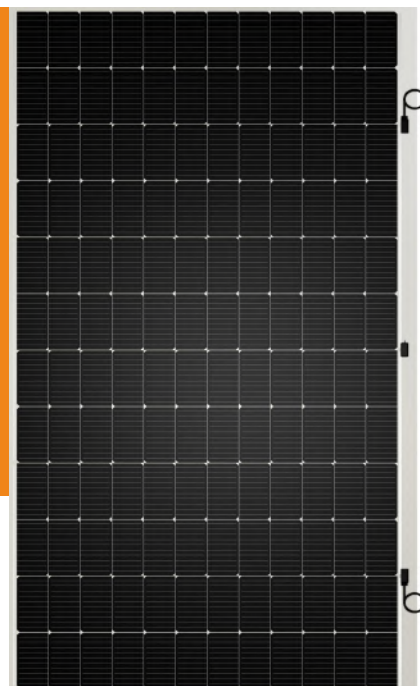
Solargiga Energy

Giga 2

JMPV-XQ1/72-510~525(R)

MONO-CRYSTALLINE HALF-CUT FLEXIBLE MODULE

MaximumPower	Maximum Efficiency	PowerTolerance
525W	19.6%	0~+5W



CELL TYPE

Perc/MBB/Monocrystalline/Half -Cell



LIGHT, THIN DESIGN

Glass and frame free module weighs 10kg, 2.5mm thickness, 70% lighter than conventional glass modules, match various requirements for low-load projects.



ULTRA FLEXIBLE

Cell manufacturing technology optimization and materials control will help reduce PID degradation rate to the minimum.



BUILDING INTEGRATION

Eliminate the traditional mounting system, Integration with underlying installation surface, ensuring the waterproof and safety performance of the roof, easy installation.

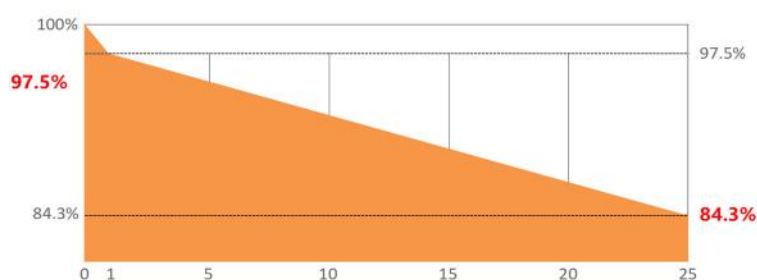


CUSTOMIZABLE

Customized design for different scenarios.

12 YEARS Product Warranty

25 YEARS Power Output Warranty



First Year Power Degradation : 2.5% , Subsequent Annual Power Degradation : 0.55%.

*Please refer to the product warranty for details.

MANAGEMENT SYSTEM CERTIFICATES

ISO 9001: Quality Management System

ISO 14001: Environmental Management System

ISO 45001: Occupational Health and Safety Management System

ISO 5001: Energy Management System

ISO 14067: Product Carbon Footprint Limited Assurance

ISO 14025: Product Environmental Declaration

IEC 62941: Quality Management System for PV Module Manufacturing

PRODUCT CERTIFICATES

IEC61215/ IEC61730



*The specific certificates applicable to different module types and markets will vary, and therefore not all of the certifications listed herein will simultaneously apply to the products you order or use. Please contact your local Solargiga Energy sales representative to confirm the specific certificates available for your Product and applicable in the regions in which the products will be used.



Founded in 2000 , Solargiga Energy Holdings Limited ('Solargiga Energy' , HKEX:00757.HK), is a renewable energy company which combines the business of the whole mono-crystalline industrial chain covering R&D manufacturing , photovoltaic application and global marketing . It 's committed to provide PV products, technical support and integrated system solution for global customers.

Website: en.solargiga.com

DS-TS2025V2.0

MONO-CRYSTALLINE HALF-CUT FLEXIBLE MODULE

MODEL NUMBER JMPV-XQ1/72-510~525(R)

ELECTRICAL PARAMETERS (STC)

Max Power (Pmax/W)	510	515	520	525
Max Power Voltage(Vmp/V)	41.46	41.56	41.66	41.76
Max Power Current (Imp/A)	12.30	12.39	12.48	12.57
Open Circuit Voltage(Voc/V)	50.15	50.25	50.35	50.45
Short Circuit Current (Isc/A)	12.66	12.76	12.86	12.96
Module Efficiency (%)	19.0	19.2	19.4	19.6

STC(Standard Test Condition): AM1.5, Irradiance 1000W/m², Cell Temperature 25°C

ELECTRICAL PARAMETERS (NMOT)

Max Power (Pmax/W)	382.63	386.23	389.85	393.97
Max Power Voltage(Vmp/V)	38.65	38.74	38.83	38.93
Max Power Current (Imp/A)	9.90	9.97	10.04	10.12
Open Circuit Voltage(Voc/V)	47.53	47.63	47.72	47.82
Short Circuit Current (Isc/A)	10.27	10.35	10.43	10.51

NMOT(Nominal Module Operating Temperature): Irradiance 800W/m², Ambient Temperature 20°C, Wind Speed 1m/s

TEMPERATURE CHARACTERISTICS

Cell Operating Temperature	42.5±2°C
Temperature Coefficient of Isc	0.054%/ °C
Temperature Coefficient of Voc	-0.262%/°C
Temperature Coefficient of Pmax	- 0.341%/ °C

MECHANICAL PARAMETERS

Cell Type	P Type/MBB/Monocrystalline/Half-Cell
Number of Cells	144 Pcs
Weight	10kg
Dimension	2246 ×1195 ×2.5mm
Encapsulant	EVA
Glass	None
Backsheet	White
Frame	Frameless
Junction Box	Protection Degree IP68; 3 diodes
Cable	1×4.0 mm ² ; +400mm, -400mm /or customized length
Bending radius	Minimum 0.5m

OPERATING CONDITIONS

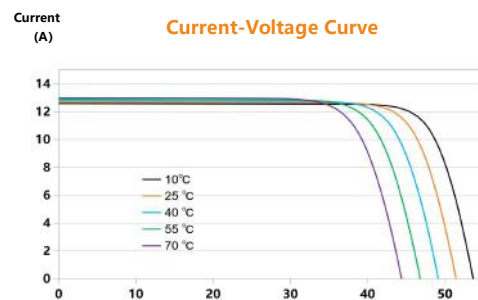
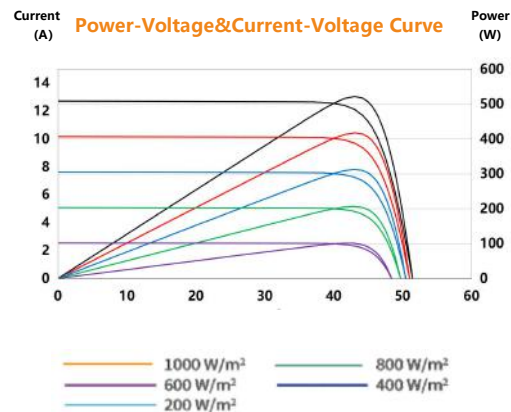
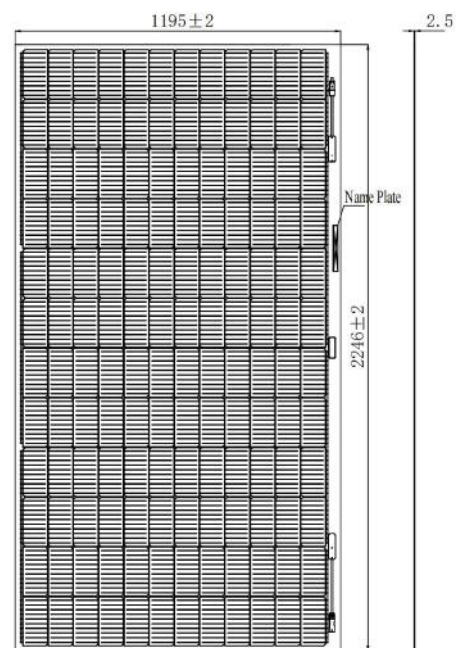
Maximum System Voltage	1500V
Operating Temperature	-40°C~+85°C
Maximum Series Fuse Rating	25A
Connector	MC4 Compatibility

*Installation should strictly obey the installation manual of Solargiga Energy

PACKING INFORMATION

Pcs/pallet	60
Pcs/40'HQ	600
Pcs/17.5m flatcar	1440

*Powertestuncertainty +/-3%



Sales HOT-line: (86)0416 508 1599

E-mail: sales@jz.solargiga.com

Xihai Industry Park, Economic and

Technical Development Zone,

Jinzhou, Liaoning Province, China.

Note: Electrical parameters are only used for comparison between different types of modules. Due to product innovation, Solargiga Energy reserves the right to adjust the information in this datasheet at any time without prior notice. The technical data in this datasheet may be slightly deviated. Customer shall obtain the latest version of the datasheet when signing contract and making it an integral part of the binding contract signed by both parties.



DS-TS2025V2.0